

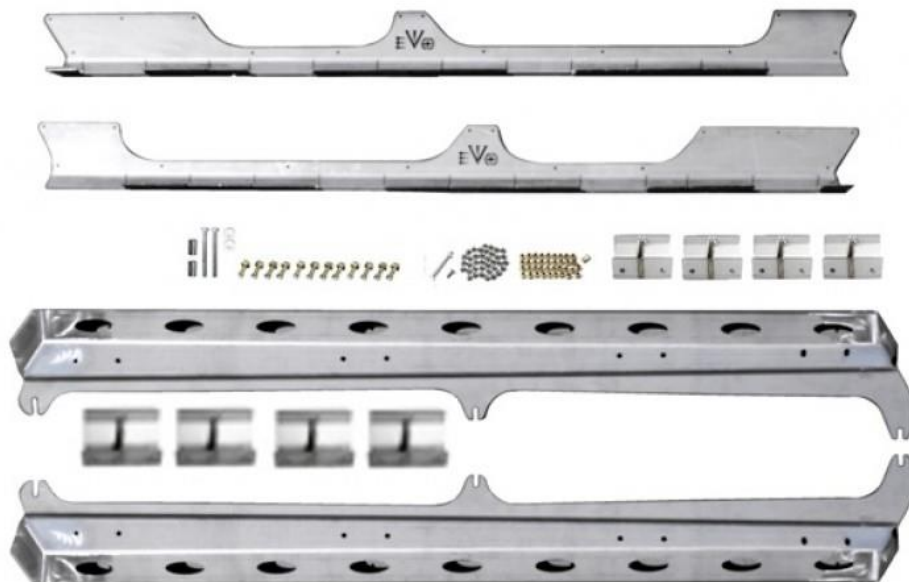


EVO Manufacturing

Jeep Wrangler JT Gladiator

JT Bomber Rockers with Rock Skin

EVO- 3071





Before starting installation procedure please read <http://evomfg.com>Returns-Warranties-Shipping>

CAREFULLY READ AND FOLLOW ALL INSTRUCTIONS IN THIS MANUAL AND KEEP FOR FUTURE REFERENCE. IF YOU HAVE ANY QUESTIONS ABOUT THE PRODUCT CALL EVO MANUFACTURING. FAILURE TO FOLLOW GUIDELINES COULD RESULT IN MALFUNCTION OF PARTS OR INJURY. PLEASE HAVE A TRAINED PROFESSIONAL ASSIST WITH OR INSTALL ALL PRODUCTS. INSTALLING EVO MFG PRODUCTS OR KITS DEMANDS SPECIFIC KNOWLEDGE, TOOLS AND EXPERIENCE. GENERAL KNOWLEDGE OF HOW TO USE LATER SPECIFIED TOOLS AND/OR LIMITED EXPERIENCE WITH EVO MFG PRODUCTS MAY NOT BE ENOUGH TO PROPERLY COMPLETE THESE TASKS. SOME OF EVO MFG PRODUCTS MAY REQUIRE TWO OR MORE PEOPLE TO INSTALL SAFELY AND CORRECTLY. DO NOT ATTEMPT ALONE, ALWAYS ENLIST THE HELP OF TRAINED PROFESSIONAL WHEN NEEDED.

Notes: Set Up Before installation

This product requires permanent drilling of holes into the body of the Jeep and installing threaded inserts. Once process has started there is no going back.

Rivnuts/Nutserts are used in this installation. Installation tool for this is required and not included. Thread size 1/4 -20

Always wear approved safety equipment while performing the installation.

It is recommended that EVO MFG Bombers/Skins are installed uncoated/painted first, then coat/paint and perform final assembly.

Keep all mounting bolts loose (installed but not torqued) we will torque later at the end of complete installation

READ BEFORE INSTALL:

It is generally a good idea to apply Loctite to all threaded bolts.

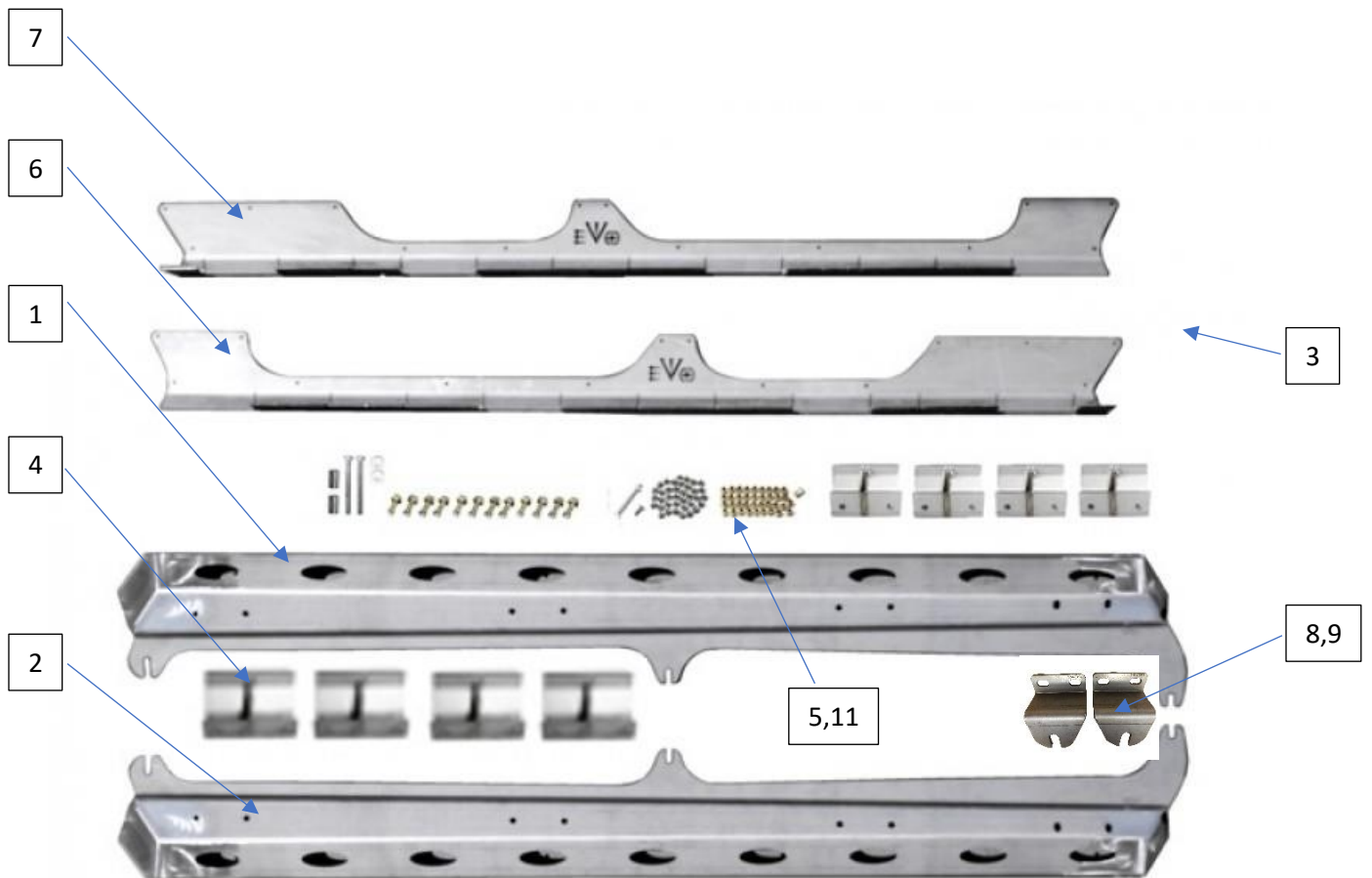
ALWAYS wear safety glasses and other approved safety gear when working on a vehicle.

All supplied bolts torqued according to chart at end of instruction.

It is recommended all installation be performed by a trained professional. Some modification may have to be done.

Parts included: Table below shows Jeep Gladiator Bomber Rockers with Rock Skins.

Description	#	Part #	Quantity
Bomber Rockers Driver	1	EVO-12400	1
Bomber Rockers Passenger	2	EVO-12401	1
Front/Mid Pinch Seam Mount	3	EVO-12353	4
Mid/Rear Pinch Seam Mount	4	EVO-12354	4
Rocker Step Hardware	5	EVO-770083	1
Rock Skin Driver	6	EVO-12402	1
Rock Skin Passenger	7	EVO-12403	1
Rear Body Mount Plate Driver	8	EVO-12421	1
Rear Body Mount Plate Passenger	9	EVO-12422	1
Forward Bodymount Crush Tube	10	EVO-12355	2
Hardware	11	EVO-770084	1



**Recommended Tools:**

- Allen set
 - Impact with standard sockets
 - Nutsert install tool
 - Drill and bit
-

**Safety Steps for installation**

- For installing EVO MFG products always use wheel chokes to block rear tires from rolling.
 - Always make sure you have everything necessary ready before install.
 - If you have to, carefully lift front of vehicle by front frame rails extending suspension until tires leave the ground, place frame on approved jack stands for vehicle. Verify all lines/wires are not over extended.
 - Remove tires if needed for easier install.
 - Make sure to wear safety equipment (eye protection, hand protection, foot protection etc.) at all times during installation.
 - Make sure all safety precautions have been taken.
 - Always check and replace any part of vehicle that is worn or broken before starting install.
 - Do not mix anything EVO with weaker alternatives.
 - It is generally a good idea to apply liquid threadlock to all bolts.
 - Tighten included hardware to torque specifications in bottom table unless it is otherwise specified, factory bolts should be torqued to factory Jeep specifications.
-





Park vehicle on flat ground,
parking brake engaged and
chalk wheels.

1. Clean both sets of EVO
MFG Rock Skins.
-





2. Hold EVO MFG Rock Skin to vehicle and align Rock Skin using body lines/door openings. Once you find a fit that works for you, mark the 4 centermost holes between the doors.

Before drilling it is the installers responsibility to verify fitment is acceptable. There is no turning back from here.

3. Once the skins are in your acceptable position, using the 4 marked holes in the Rock Skin drill through the outer sheet metal of body only using a 25/64" drill bit.



Step Drill recommended

4. Follow manufacturers tool procedure and install nutserts into 4 drilled holes.



5. Replace EVO MFG Rock Skin on the side of the vehicle and bolt to body (snug) in the 4 locations with installed nutserts. DO NOT overtighten bolts.
 6. Once Skin is bolted to body, press Skin flush to body, mark all other holes for drilling. Forward and rearward of center.
 7. Remove Skin from body. Follow tool procedure to drill holes and insert remaining nutserts.
-



8. Loosely install Rock Skin at all bolt locations and repeat previous steps on alternate side.
-



9. Uninstall front body mount bolt. Loosen (do not remove) middle and rearward body mount bolts.
-



10. Loosely preassemble inner seam mounts to main bomber rails. The inner seam mounts with the 4-center hole pattern will be used at both front and front/middle locations. The inner seam mount with the 2-center hole pattern will be used at the rear and rear/middle locations.
-



11. Using the supplied 3/8" hardware, loosely install all 8 bolts from bottom up at all 4 inner seam mount locations (2 each mount). It is best to tighten these to the point just before getting tight (loose but almost tight). This will save time later during final install while tightening all bolts on the vehicle.

On top side of bomber, install all 4 seam mount button head bolts completely.



12. Install rear body mount plate to bomber using 3/8" hardware.

Mount the plate with slotted end facing upwards. Attach the plate on the top side of rear mounting holes of bomber. Use 2 of the supplied 3/8" bolt and nut.



13. With the help of two people, lift Bomber into location setting bomber onto Rock Skin tabs while inserting rear and middle body mount tabs into loosened body mount bolts.

14. Once bomber is placed on Rock Skins, loosely install all button head bolts in remaining Rock Skin to Bomber bolt locations.



15. Insert spacer tube in gap between Bomber and front body mount.

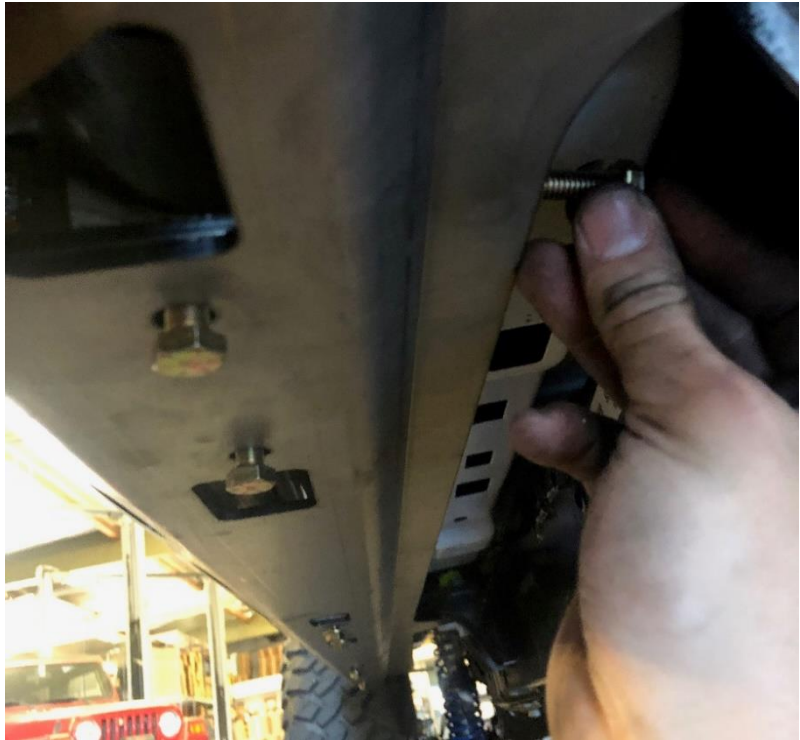
16. Loosely (just before tightening) install the supplied M12 bolt with washer at this front body mount location.

17. Reinstall the middle body mount bolt, just before tight.



18. Using the factory holes in body pinch seam install supplied 5/16" bolts and washers through body and into inner seam mounts.

On 5/16" bolts, install bolts with washer on head side only. The inside nut is a flange nut, no washers are used on flange nut.



When all bolts in parts are installed, apply an inward pressure on bomber, tighten body mount bolts.



Then tighten all pinch
seam bolts.



Lastly tighten down Rock
Skin bolts.





After Install:

- Tighten all bolts securing purchased parts to specified locations.
- After completing installation using provided instructions, go through all steps again to make sure nothing was missed, not tightened or improperly assembled.
- Some components may need to be purchased separately.
- Check turn signals, headlights, fog lights (if applicable), taillights, blinkers and windshield wipers.
- Adjust mirrors, speedometer and headlights if needed.
- Make sure all gauges are fully operational.
- Drive the vehicle slowly for a couple minutes, looking and listening for abnormal noises while driving. After modification of a vehicle there will be differences in driving experiences and capabilities, be mindful of that.
- Inspect and Retorque all Bolts after 500 miles of completed installation and regularly thereafter.
- Some modification may be required.

Recommended Torque:

Size	Grade 2		Grade 5		Grade 8		18-8 S/S	
	Coarse	Fine	Coarse	Fine	Coarse	Fine	Coarse	Fine
#4*	-	-	-	-	-	-	5.2	-
#6*	-	-	-	-	-	-	9.6	-
#8*	-	-	-	-	-	-	19.8	-
#10*	-	-	-	-	-	-	22.8	31.7
1/4	4	4.7	6.3	7.3	9	10	6.3	7.8
5/16	8	9	13	14	18	20	11	11.8
3/8	15	17	23	26	33	37	20	22
7/16	24	27	37	41	52	58	31	33
1/2	37	41	57	64	80	90	43	45
9/16	53	59	82	91	115	129	57	63
5/8	73	83	112	128	159	180	93	104
3/4	125	138	200	223	282	315	128	124
7/8	129	144	322	355	454	501	194	193
1†	188	210	483	541	682	764	287	289